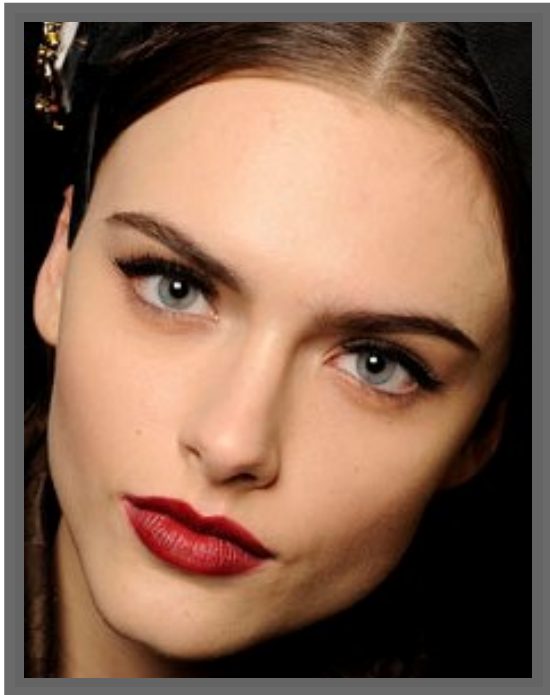


Three Colours - Red

1994 - Drama/Mystery. Valentine, a young model living in Geneva, meets a retired judge who spies on his neighbours' phone calls, not for money but to feed his cynicism...

Inspired by Parisienne chic, we created this captivating and timeless look.



Addicted Cosmetics Products

COMPLEXION

Essential Foundation or Matte Cover Oil-Free Foundation
Professional Loose Powder
Silk Touch Blush - in *Honey Almond* or *Touch of Earth*
or *Hint of Pink* (for darker skin shades)

EYES

Satin Colour Eyeshadow - in *Mantium Glow*
Style Define Eye Pencil - in *Onyx*
Lash Intense Mascara - in *Jet Black*
Everlast Liquid Eyeliner - in *Midnight Black*

LIPS

Colour Smooth Lipstick - in *Winter Catch* (for lighter and medium skin shades), or in *Marooned 'n Wild* (for darker skin shades)
Style Define Lip Pencil - in *Red* (for lighter skin shades),
or in *Spice* (for darker skin shades)

BRUSHES

Foundation Brush
Powder Brush
Blush Brush
Smudger Brush (to apply the eyeshadow)
Sponge Applicator (to apply the lipstick)

COMPLEXION

As always, cleanse and moisturise your face before applying any facial primer and foundation.

Apply your shade of *Essential Foundation* or *Matte Cover Oil-Free Foundation*, gently all over your face. Leave the foundation to settle on your skin for a few minutes before applying the rest of your make up. If desired, you can dust a thin layer of *Professional Loose Powder* all over your face, including over your eyelids, to set the foundation and prevent shine.

Smooth your *Addicted Cosmetics Blush Brush* (or the mini blush brush provided with your *Silk Touch Blush* compact), along the surface of the blush, and tap off any excess powder. Apply the blush lightly, over the 'apple' of your cheeks, using short, upward, sweeping motions towards the top of your ear.

Always be careful to apply the blush in one direction, and avoid the temptation to apply the blush using circular motions, as this might leave streak marks on your face.

EYES

Using your *Style Define Eye Pencil*, draw a fine line along the edge of your lower eyelash.

Sweep '*Matium Glow*' *Satin Colour Eyeshadow* over your eyelids, starting from the inner corner of your eyes, before moving across and up, into your eye crease.

Apply a thin line of *Everlast Liquid Eyeliner* to your upper lash line. To help you achieve a precise application, use your finger to pull the skin at the outside corner of your eyelid (just beneath the end of your eyebrow), outwards. Starting from the middle of your lash line, draw a line to the outer corner of your eyelid (drawing dashes or dots along the lash line first may help you to draw a precise line). Build up the line to achieve your desired thickness, then extend it to the inner corner of your eye.

curl your upper eyelashes.

Now apply *Lash Intense Mascara*, starting with the eyelashes on the outside of your eyelid and moving inwards. You can apply additional coverings of mascara to increase the impact of your eyes.

LIPS

Dab some *Professional Loose Powder* onto your moisturised lips to provide a matte base.

Line your lips using a *Style Define Lip Pencil*, starting at the top of your upper lip. If you have small lips and want them to look fuller, draw the line slightly outside your natural lip line. If necessary, smudge the lip line you have drawn with your fingers carefully, to soften the line and create a more natural appearance.

Apply the first coat of *Colour Smooth Lipstick*, using your *Addicted Cosmetics Sponge Applicator*. Starting with your upper lip, work inwards from the corners of your lips. Fill both lips in with lipstick, ensuring that you blend into the pencil line. Place a tissue between your lips and press them together gently, to blot away excess lipstick. Finally, apply a second coat of lipstick, to leave you with daring red lips.

FINISHING TOUCH

Finish off the look by using your *Addicted Cosmetics Powder Brush* to dust a very thin layer of *Professional Loose Powder* over your face. Concentrate on your 't-zone' in particular if you need to reduce shine. To help prevent your eyeshadow and blush colours fading, you can also dust lightly over your eyes and cheeks.