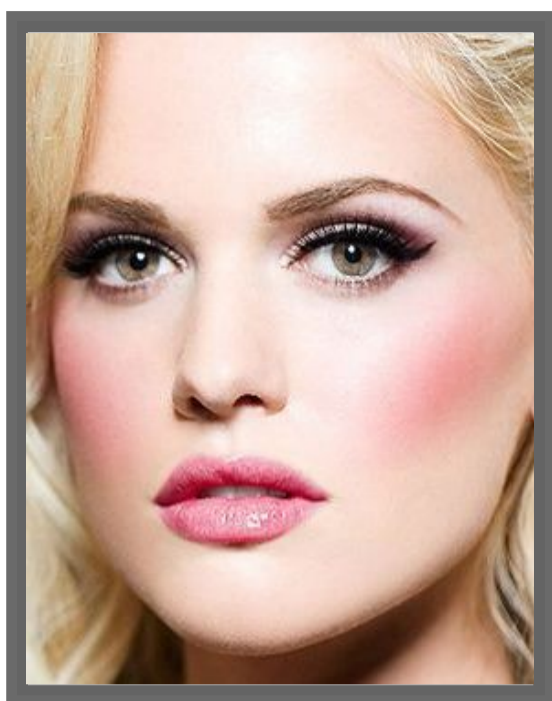


Pretty in Pink

1986 - Teen Drama. A young girl, Andie, has to choose between her childhood love and a new, rich playboy she has met...

Inspired by an obsession for everything pink, we created this vibrant look.



Addicted Cosmetics Products

COMPLEXION

Essential Foundation or Matte Cover Oil-Free Foundation
Professional Loose Powder
Silk Touch Blush - in *Pink Cocoa* (for lighter skin shades); or in *Baby Love* or *Hint of Pink* (for darker skin shades)

EYES

Satin Colour Eyeshadow - in *Savannah Pink*, *Pink Icicle* and *Silent Sherbert*
Style Define Eye Pencil - in *Onyx*
Lash Intense Mascara - in *Jet Black*
Everlast Liquid Eyeliner - in *Midnight Black*

LIPS

Colour Smooth Lipstick - in *Innocent Rosa* or *Summer Pink*
Creamitouch Lipgloss - in *Pink Rose*

BRUSHES

Foundation Brush
Powder Brush
Blush Brush
Fluff Brush (to apply the base eyeshadow)
Smudger Brush (to apply the eyelid and eye crease eyeshadow)
Sponge Applicator (to apply the lipstick)

COMPLEXION

As always, cleanse and moisturise your face before applying any facial primer and foundation.

Apply your shade of *Essential Foundation* or *Matte Cover Oil-Free Foundation*, gently all over your face. Leave the foundation to settle on your skin for a few minutes before applying the rest of your make up. If desired, you can dust a thin layer of *Professional Loose Powder* all over your face, including over your eyelids, to set the foundation and prevent shine.

Smooth your *Addicted Cosmetics Blush Brush* (or the mini blush brush provided with your *Silk Touch Blush* compact), along the surface of the blush, and tap off any excess powder. Apply the blush lightly, over the 'apple' of your cheeks, using short, upward, sweeping motions towards the top of your ear.

Always be careful to apply the blush in one direction, and avoid the temptation to apply the blush using circular motions, as this might leave streak marks on your face.

EYES

Using your *Style Define Eye Pencil*, draw a fine line along the edge of your lower eye lash.

Sweep '*Savannah Pink*' *Satin Colour Eyeshadow* over your eyelids, starting from the inner corner of your eyes, before moving across and up, into your eye crease. This shade is your base eyeshadow for this look.

Next, apply '*Pink Icicle*' *Satin Colour Eyeshadow* onto your eyelid, and blend it into your base eyeshadow shade.

To add depth, apply '*Silent Sherbert*' *Satin Colour Eyeshadow* (the darkest eyeshadow shade in this look), in an arc along the crease of your eye, starting at the outer corner of your eye, all the way across to the inner corner of your eye. Now apply the '*Silent Sherbert*' *Satin Colour Eyeshadow* to the outer corner of your eyelid and blend it into the centre slightly. The inner part of your eyelid should remain a blend of the base shade and the '*Pink Icicle*' *Satin Colour Eyeshadow*.

Apply a thin line of *Everlast Liquid Eyeliner* to your upper lash line. To help you achieve a precise application, use your finger to pull the skin at the outside corner of your eyelid (just beneath the end of your eyebrow), outwards. Starting from the middle of your lash line, draw a line to the outer corner of your eyelid (drawing dashes or dots along the lash line first may help you to draw a precise line). Build up the line to achieve your desired thickness, then extend a thin line to the inner corner of your eyelid.

The extended line should be thinner towards your tear duct, but get progressively wider as it nears the outer corner of your eyelid.

For a more dramatic look, continue the eyeliner line upwards, past the outer corner of your eyelid, at an angle of about 45 degrees (again you can draw dashes or dots first if that helps).

Curl your upper eyelashes.

Now apply *Lash Intense Mascara*, starting with the eyelashes on the outside of your eyelid and moving inwards. To achieve a more dramatic effect, apply a second covering of mascara to the eyelashes towards the outside of your lash line.

LIPS

This look works well with either a matte pink *Colour Smooth Lipstick* shade or a pink *Creamitouch Lipgloss* shade.

If you are using a *Colour Smooth Lipstick*, dab some *Professional Loose Powder* onto your moisturised lips before applying the lipstick, to provide a matte base and help it last longer. After applying the first coat of lipstick using your *Addicted Cosmetics Sponge Applicator*, place a tissue between your lips and press them together gently, to blot away excess lipstick.

Now, apply a second coat of lipstick, to leave you with fulsome, pink lips.

FINISHING TOUCH

Finish off the look by using your *Addicted Cosmetics Powder Brush* to dust a very thin layer of *Professional Loose Powder* over your face. Concentrate on your 't-zone' in particular if you need to reduce shine. To help prevent your eyeshadow and blush colours fading, you can also dust lightly over your eyes and cheeks.