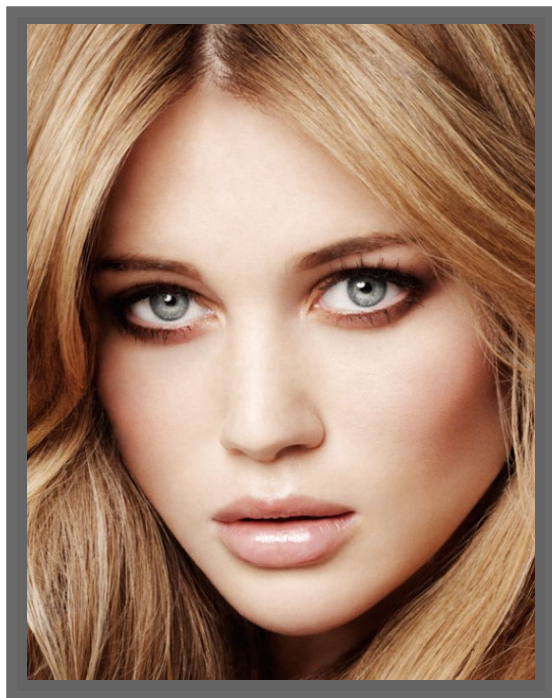


Natural Born Killers

1995 - Action/Thriller. Mickey and Mallory, both victims of traumatised childhoods, become lovers but express their devotion in dangerous ways...

Inspired by natural beauty, we created this killer look.



Addicted Cosmetics Products

COMPLEXION

Essential Foundation or Matte Cover Oil-Free Foundation
Professional Loose Powder
Silk Touch Blush - in *Nature's Sparkle* or in *Summer Glow*

EYES

Satin Colour Eyeshadow - in *Dune Shimmer*, *Sahara Oasis* and *Gleaming Cocoa*
Style Define Eye Pencil - in *Chestnut*
Lash Intense Mascara - in *Deep Brown*
Everlast Liquid Eyeliner - in *Chocolate Stream*

LIPS

Creamitouch Lipgloss - in *Caramel Candy*
Baby Mint Lipgloss - in *Peach*

BRUSHES

Foundation Brush
Powder Brush
Blush Brush
Fluff Brush (to apply the base eyeshadow)
Smudger Brush (to apply the eyelid and eye crease eyeshadow)
Eye Contour Brush (to apply eyeshadow to the lower eyelid)

COMPLEXION

As always, cleanse and moisturise your face before applying any facial primer and foundation.

Apply your shade of *Essential Foundation* or *Matte Cover Oil-Free Foundation*, gently all over your face. Leave the foundation to settle on your skin for a few minutes before applying the rest of your make up. If desired, you can dust a thin layer of *Professional Loose Powder* all over your face, including over your eyelids, to set the foundation and prevent shine.

Smooth your *Addicted Cosmetics Blush Brush* (or the mini blush brush provided with your *Silk Touch Blush* compact), along the surface of the blush, and tap off any excess powder. Apply the blush lightly, over the 'apple' of your cheeks, using short, upward, sweeping motions towards the top of your ear.

Always be careful to apply the blush in one direction, and avoid the temptation to apply the blush using circular motions, as this might leave streak marks on your face.

EYES

Using your *Style Define Eye Pencil*, draw a fine line along the edge of your lower eyelash.

Sweep '*Dune Shimmer*' *Satin Colour Eyeshadow* over your eyelids, starting from the inner corner of your eyes, before moving across and up, into your eye crease. This shade is your base eyeshadow for this look.

To add depth, apply '*Gleaming Cocoa*' *Satin Colour Eyeshadow* (the darkest eyeshadow shade in this look), in an arc along the crease of your eye, starting at the outer corner of your eye, all the way across to the inner corner of your eye. Now apply the '*Gleaming Cocoa*' *Satin Colour Eyeshadow* to the outer corner of your eyelid and blend it into the centre slightly. Extend the '*Gleaming Cocoa*' *Satin Colour Eyeshadow* past the outer corner of your eyelid to reach a tip just past the outer edge of your eyebrow. Now use your *Addicted Cosmetics Eye Contour Brush* to apply a thin line of '*Gleaming Cocoa*' *Satin Colour Eyeshadow* along the bottom of your lower eyelash line.

Add some extra shimmer to your eye make up by applying '*Sahara Oasis*' *Satin Colour Eyeshadow* to the inside corner of your eyelid, then (starting from your tear duct), blend it outwards into the eyeshadow shades already on your eyelid. Blend the '*Sahara Oasis*' *Satin Colour Eyeshadow* both above your upper eyelash line and below your lower eyelash line about a third of the way outwards from your tear duct.

Apply a thin line of *Everlast Liquid Eyeliner* to your upper lash line. To help you achieve a precise application, use your finger to pull the skin at the outside corner of your eyelid (just beneath the end of your eyebrow), outwards. Starting from the middle of your lash line, draw a line to the outer corner of your eyelid (drawing dashes or dots along the lash line first may help you to draw a precise line). Build up the line to achieve your desired thickness, then extend a thin line to the inner corner of your eye.

Curl your upper eyelashes.

Now apply *Lash Intense Mascara*, starting with the eyelashes on the outside of your eyelid and moving inwards.

LIPS

Apply *Creamitouch Lipgloss* or *Baby Mint Lipgloss* for a natural, glossy finish.

FINISHING TOUCH

Finish off the look by using your *Addicted Cosmetics Powder Brush* to dust a very thin layer of *Professional Loose Powder* over your face. Concentrate on your 't-zone' in particular if you need to reduce shine. To help prevent your eyeshadow and blush colours fading, you can also dust lightly over your eyes and cheeks.