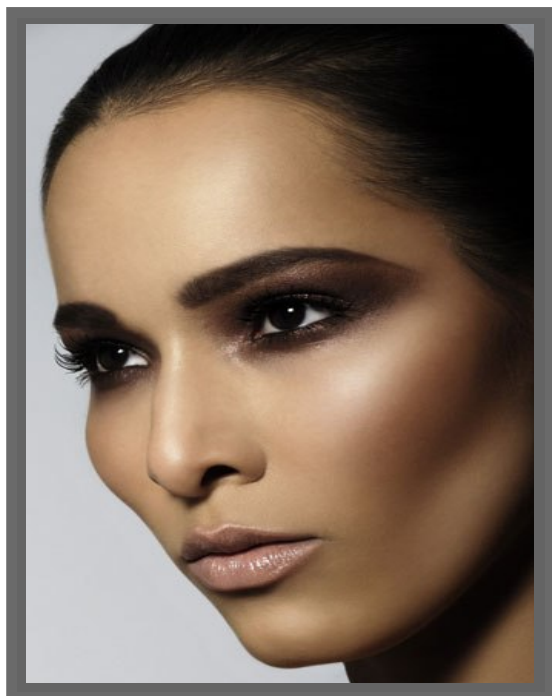


Holy Smoke

1999 - Drama/Comedy. While on a journey of discovery in exotic India, a beautiful, young Ruth falls under the influence of a charismatic religious guru...

Inspired by the mystery and passion of the ancient mystics, we created this alluring look.



Addicted Cosmetics Products

COMPLEXION

Essential Foundation or Matte Cover Oil-Free Foundation
Professional Loose Powder
Silk Touch Blush - in *Cappuccino* or *Summer Glow*

EYES

Satin Colour Eyeshadow - in *Lightening Noire* and *Silver Sliver* (for a darker combination); or in *Lightening Noire* and *Safari Zest* (for a khaki combination); or in *Lightening Noire* and *Smoke 'n Shards* (for a deep plum combination); and in *Cleopatrian* (as a highlighting shade)
Style Define Eye Pencil - in *Onyx*
Lash Intense Mascara - in *Jet Black*
Everlast Liquid Eyeliner - in *Midnight Black*

LIPS

Colour Smooth Lipstick - in *Elegant Kiss*
Baby Mint Lipgloss - in *Satin*

BRUSHES

Foundation Brush
Powder Brush
Blush Brush
Fluff Brush (to apply the base eyeshadow)
Smudger Brush (to apply the eyelid and eye crease eyeshadow)
Eye Contour Brush (to apply eyeshadow to the lower eyelid)
Sponge Applicator (to apply the lipstick)

COMPLEXION

As always, cleanse and moisturise your face before applying any facial primer and foundation.

Apply your shade of *Essential Foundation* or *Matte Cover Oil-Free Foundation*, gently all over your face. Leave the foundation to settle on your skin for a few minutes before applying the rest of your make up. If desired, you can dust a thin layer of *Professional Loose Powder* all over your face, including over your eyelids, to set the foundation and prevent shine.

Smooth your *Addicted Cosmetics Blush Brush* (or the mini blush brush provided with your *Silk Touch Blush* compact), along the surface of the blush, and tap off any excess powder. Apply the blush lightly, over the 'apple' of your cheeks, using short, upward, sweeping motions towards the top of your ear.

Always be careful to apply the blush in one direction, and avoid the temptation to apply the blush using circular motions, as this might leave streak marks on your face.

EYES

Use one finger to hold down your lower eyelid then, with your *Style Define Eye Pencil*, draw a fine line along the inner part of your lower eyelash (between your lower eyelash and your eye). Be careful to avoid touching your eye with the pencil.

Next, to achieve a line along the base of your upper eyelash, use your eye pencil to draw small dashes within the roots of your upper eyelashes, and try to join them up as much as possible.

Sweep '*Silver Sliver*' *Satin Colour Eyeshadow* over the whole of your eyelid, starting from the inner corner of your eyelid, before moving across and up, to apply the eyeshadow into your eye crease. This shade is your base eyeshadow for this look.

Next, apply '*Lightening Noire*' *Satin Colour Eyeshadow* across your eyelid. Start applying the '*Lightening Noire*' *Satin Colour Eyeshadow* slightly higher than your lighter base eyeshadow, but finish just above your eye crease. Now use your *Addicted Cosmetics Eye Contour Brush* to add a thin line of '*Lightening Noire*' *Satin Colour Eyeshadow* beneath your lower eyelash, then extend both the upper and lower parts of the '*Lightening Noire*' *Satin Colour Eyeshadow* past the outer corner of your eye so they meet at a point just beneath the outer tip of your eyebrow.

Next, use your *Addicted Cosmetics Eye Contour Brush* to apply and blend a narrow line of '*Silver Sliver*' *Satin Colour Eyeshadow* beneath the '*Lightening Noire*' *Satin Colour Eyeshadow* under your lower eyelash line.

Complete your eye make up by applying a hint of '*Cleopatrian*' *Satin Colour Eyeshadow*, as a highlighting shade, to both the inside corner of your eye, and also between your eyebrow and eye crease. Make sure you blend the '*Cleopatrian*' *Satin Colour Eyeshadow* into the other two eyeshadow shades already on your eyelids.

Apply a thin line of *Everlast Liquid Eyeliner* to your upper lash line. To help you achieve a precise application, use your finger to pull the skin at the outside corner of your eyelid (just beneath the end of your eyebrow), outwards. Starting from the middle of your lash line, draw a line to the outer corner of your eyelid (drawing dashes or dots along the lash line first may help you to draw a precise line). Build up the line to achieve your desired thickness, then extend a thin line to the inner corner of your eye.

Curl your upper eyelashes.

Now apply *Lash Intense Mascara*, starting with the eyelashes on the outside of your eyelid and moving inwards.

LIPS

Apply *Creamitouch Lipgloss* or *Baby Mint Lipgloss* for a natural, glossy finish.

FINISHING TOUCH

Finish off the look by using your *Addicted Cosmetics Powder Brush* to dust a very thin layer of *Professional Loose Powder* over your face. Concentrate on your 't-zone' in particular if you need to reduce shine. To help prevent your eyeshadow and blush colours fading, you can also dust lightly over your eyes and cheeks.